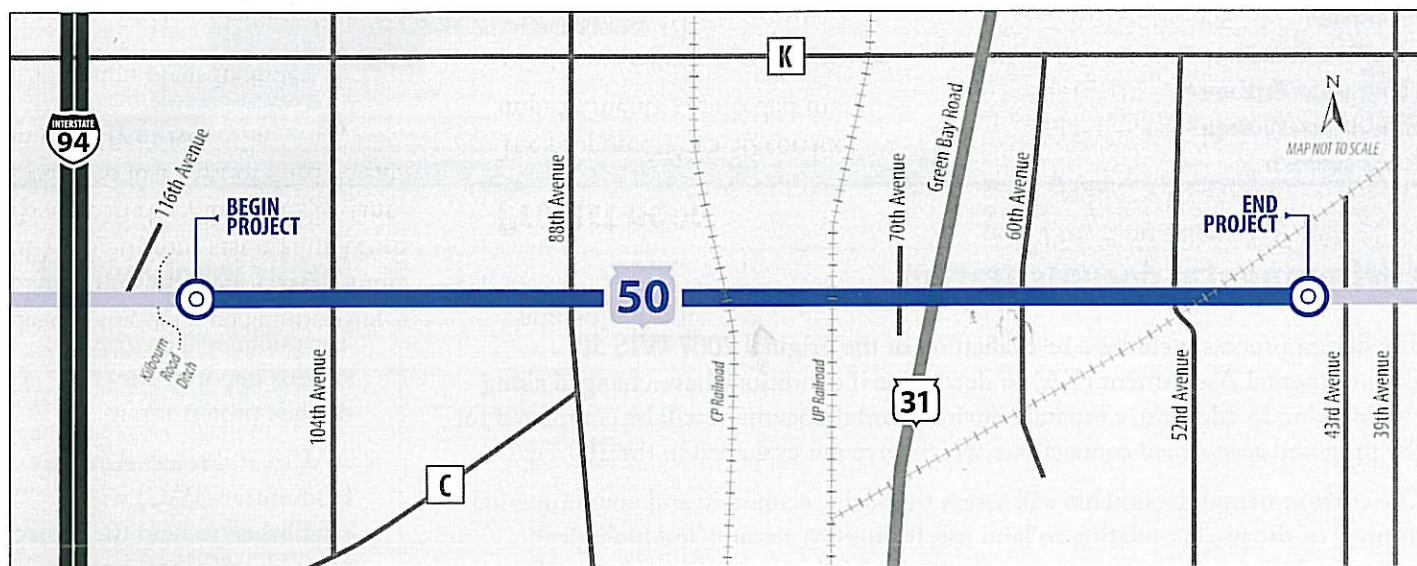


WisDOT advances design plans for WIS 50 corridor



▲ Project area map

The Wisconsin Department of Transportation (WisDOT) is developing detailed engineering plans to reconstruct nearly 5 miles of WIS 50 from just east of 116th Avenue in the village of Pleasant Prairie to just west of 43rd Avenue in the city of Kenosha.

The design plans include:

- Widening the roadway from four to six lanes between 116th and 57th avenues.
- Reconstructing and improving intersections with WIS 50.
- Implementing access management measures.
- Providing improved access road connections.

- Reconstructing the existing four-lane road between 57th and 43rd avenues.

Project need

The proposed WIS 50 corridor improvements are needed to:

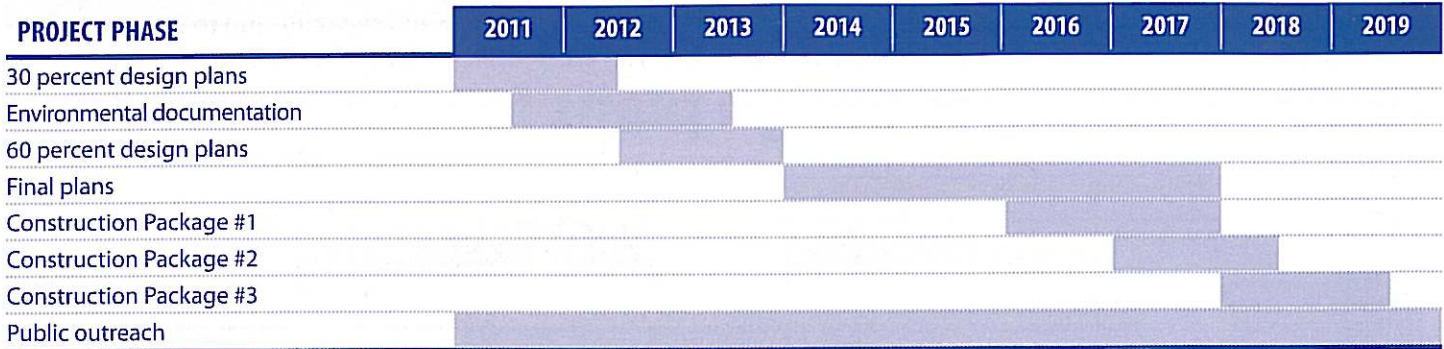
- Address traffic congestion caused by volumes that exceed the roadway's capacity.
- Reduce crash rates that are above state averages for similar highways.
- Balance the mobility of the corridor with access needs.
- Maintain an important state and local corridor that links economic centers.

SPECIAL PROJECT ELEMENTS

- Providing sidewalk and bicycle facilities.
- Identifying potential corridor aesthetic treatments.
- Transferring WIS 50 to local jurisdiction between WIS 31 and WIS 32.
- Identifying stormwater management techniques.
- Developing a traffic management plan for construction.

Project schedule

The 30 percent design plans will be finalized this summer. The completion of 60 percent design plans is expected toward the end of 2013. Final plan development will continue through 2018. Construction for WIS 50 is expected to occur in three phases beginning in fall 2016, fall 2017 and fall 2018. The details of each construction package will be determined during the project's final design phase.



Environmental documentation

The design process includes a re-evaluation of the original 2007 WIS 50 Environmental Assessment (EA) to determine if conditions have changed along the corridor. In addition, a separate environmental document will be completed for the proposed access road connections, which were not evaluated in the 2007 EA.

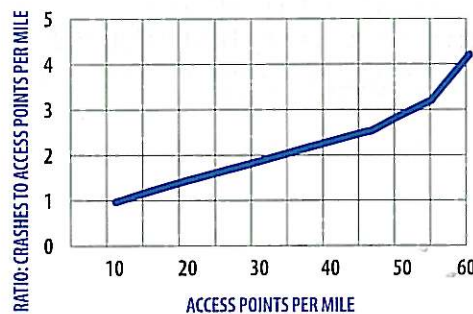
The environmental documents will assess the social, economic and environmental impacts of the project relating to land use, businesses, natural and biological resources, historic structures, stormwater, noise levels, air quality and other factors.

Access management

Decision-makers from WisDOT, the city of Kenosha and the village of Pleasant Prairie agreed on updated access management guidelines for the WIS 50 corridor in 2011.

Access management helps improve safety and reduce traffic delay by carefully planning the location and spacing of access points, street connections and median openings.

The WIS 50 reconstruction project will continue to implement access management measures including reducing the number of access points along WIS 50, restricting some median openings and providing new access roads.



▲ *Crash rates rise as the number of access points along a corridor increases.*
Source: Transportation Research Board.

To learn more about access management, visit the Federal Highway Administration's Access Management and Resources Web page at www.ops.fhwa.dot.gov/access_mgmt/resources.htm.

Public involvement

The public will be given various opportunities to provide project input.

A WIS 50 Project Advisory Committee (PAC) was established to help the project team identify local issues and provide feedback on the design plans. The PAC includes property owners and businesses, local government staff, and federal and state agencies. The first PAC meeting was on March 20, 2012.

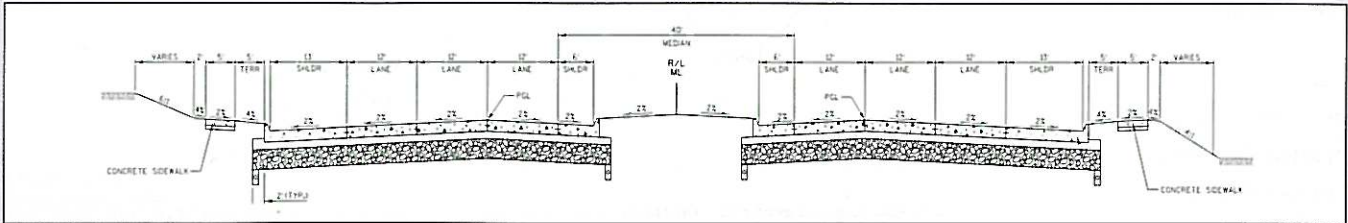
Public meetings during project milestones will provide opportunities for interested persons to obtain information and provide feedback. Also, ongoing meetings with local and elected officials, corridor businesses and interested groups will be held as needed.

A public open house is scheduled for June 26, from 4:30 to 7 p.m., at the First Assembly of God Church, 10700 75th St. in Kenosha. See the invitation on the back page of this newsletter for more information.

Design features

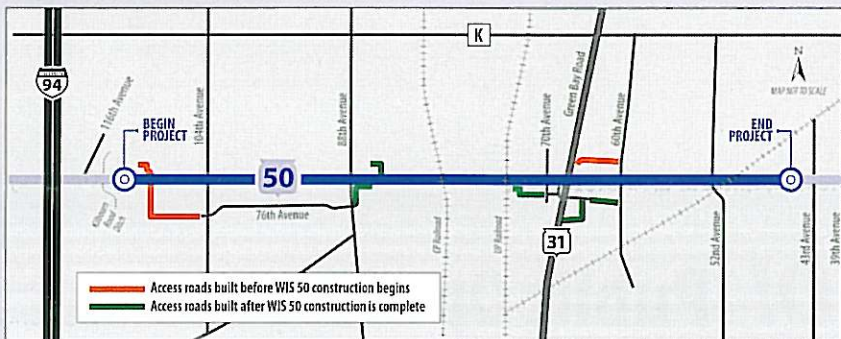
Capacity expansion

WIS 50 will be expanded from four to six lanes between 116th and 57th avenues. This is needed to accommodate the current and projected traffic volumes that exceed the roadway's capacity, and to improve safety. WIS 50 between 57th and 43rd avenues will be reconstructed in its existing four-lane configuration.



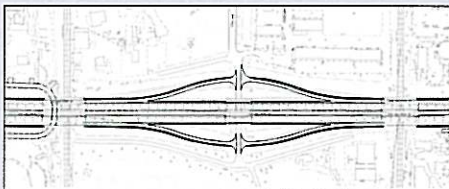
▲ WIS 50 6-lane typical finished section

Access roads



New access roads are being designed to help alleviate traffic congestion along WIS 50 and provide alternate access to local properties and businesses. Some access roads will be built before WIS 50 is reconstructed, while other access roads will be built in the future as development occurs.

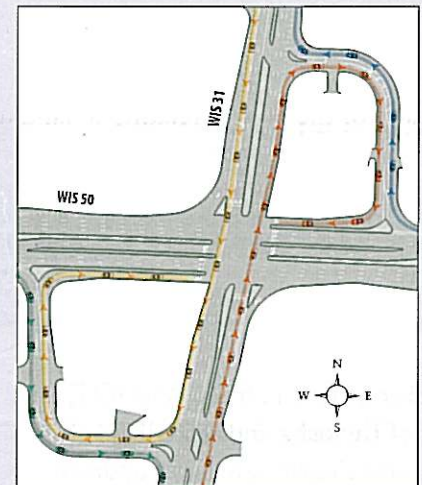
77th Avenue Interchange



Reconstruction of the 77th Avenue Interchange will improve safety for drivers entering and exiting the ramps. The new design will provide auxiliary lanes along

WIS 50 to give drivers more acceleration and deceleration time. Sight distance issues will also be improved.

Jughandle intersection at WIS 50/WIS 31



The jughandle roads are being designed to reduce the number of turning lanes within the main intersection. The jughandles will be used for left turns from WIS 31 and for right turns from WIS 50. Left-turn lanes along WIS 50 and right-turn lanes along WIS 31 will still be located at the main intersection.

Roadway signs will guide drivers through the intersection.

WIS 50 Reconstruction Project

WisDOT DTSD SE Region
141 NW Barstow St.
Waukesha, WI 53187

PRSRT STD
US POSTAGE PAID
MILWAUKEE WI
PERMIT NO 3563

You are **INVITED!** Public Open House

DATE

Tuesday, June 26, 2012

TIME

4:30 to 7 p.m.
(presentation at 5:15 p.m.)

PLACE

First Assembly
of God Church
10700 75th St.
Kenosha, WI

WisDOT is holding a public open house meeting to present the 30 percent design plans for the WIS 50 reconstruction project. The design plans will be on display for review and project staff will be available to discuss the plans and answer questions.

Citizens who are interested in or knowledgeable about historical or archaeological resources in the project area are invited to share information at the open house or to contact Jason Dahlgren (below).

Project Contact

Jason Dahlgren, PE, WisDOT Project Manager



(262) 521-5349



Jason.Dahlgren@dot.wi.gov

To request interpretation services for the hearing impaired, please call 711, the Wisconsin Telecommunication Relay System, at least three working days prior to the meeting. Ask the communication assistant to contact WisDOT Project Manager Jason Dahlgren, PE, at (262) 521-5349.