



# COUNTY OF KENOSHA

Chris Masin, PE, Director  
Department of Public Works & Development Services  
Chris.Masin@kenoshacounty.org

Gary Sipsma, Director  
Division of Highways  
19600 75<sup>th</sup> Street, Suite 122-1  
Bristol, Wisconsin 53104  
(262) 857-1870  
Fax: (262) 857-1885

## NEWS RELEASE

June 12, 2014

### **Work Starting on County Trunk Highway “C” and “H” Intersection in the Village of Pleasant Prairie**

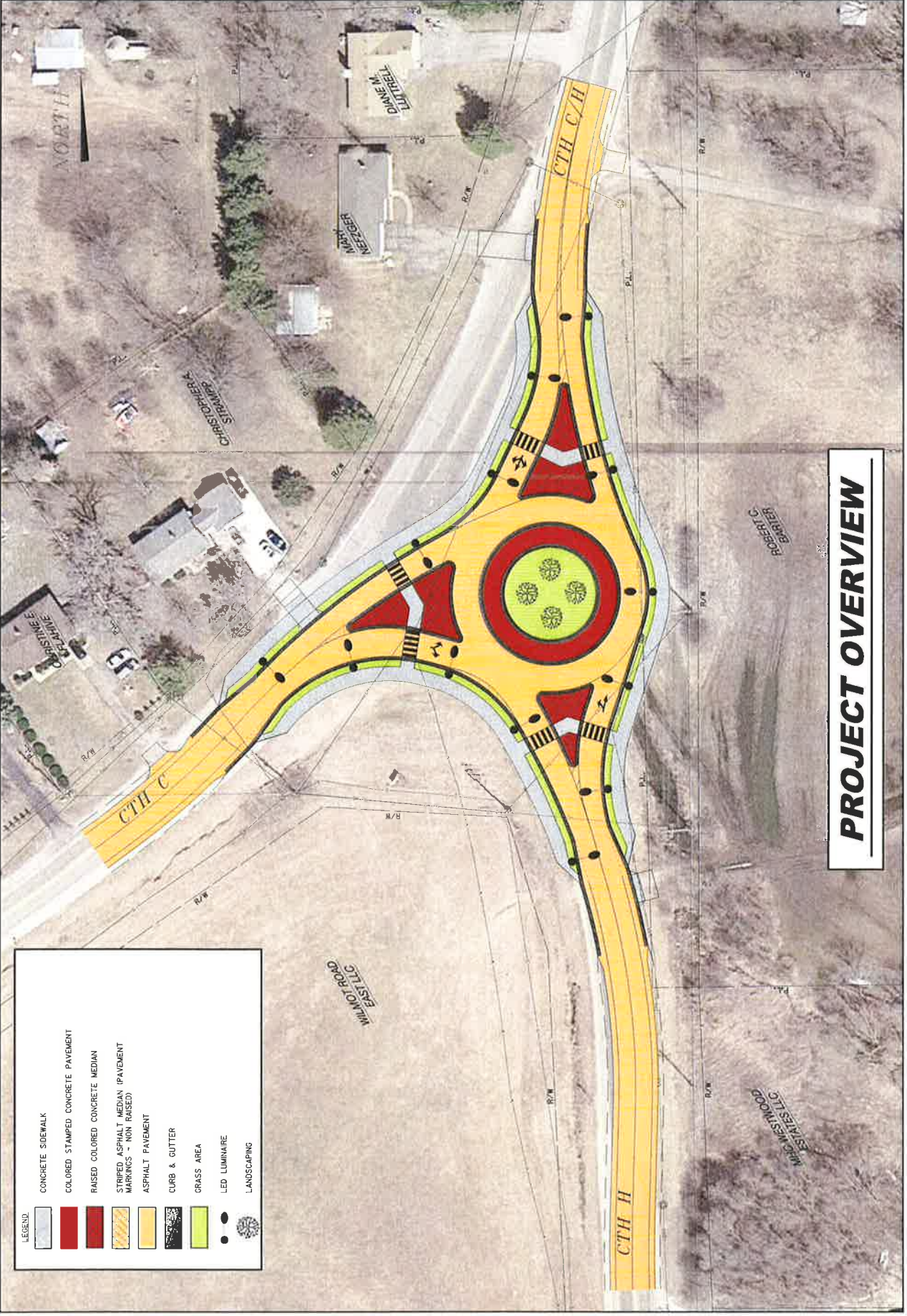
Kenosha County announces the beginning of work on County Trunk Highway “C” and “H” Intersection in the Village of Pleasant Prairie. The project will begin on Monday June 16, 2014. The intersection of County Trunk Highway “C” and “H” will remain open to traffic for approximately one week during the initial phase of construction. The intersection will then be closed to traffic and will remain closed for the duration of the project.

The project involves the complete reconstruction of the intersection from a “T” intersection to a roundabout. These segments of CTH “C” and CTH “H” have historically been the location of numerous vehicle crashes and the intersection experiences significant delays during peak hour periods of the day. The intersection improvements are designed specifically to improve the vehicle crash and operational issues. It is anticipated that all work associated with the project will be completed by Labor Day weekend, however, unexpected conditions can affect the final completion date.

The contractor for the project is A. W. Oakes and Son, of Racine Wisconsin. The contract amount for the project is \$722,618. This is a Local Road Improvement Program project. Kenosha County will be reimbursed for \$306,143 of the project cost from the State of Wisconsin through the Local Road Improvement Program.

The detour route for motorists will be posted using Bain Station Road – CTH “C” – 104<sup>th</sup> Avenue – STH 50. A specific detour for trucks will be posted using 95<sup>th</sup> Street – STH 31 – STH 50. All trucks must use the posted truck detour. Trucks are prohibited on Bain Station Road, CTH “C” and 104<sup>th</sup> Avenue. As part of the detour, temporary four-way stop signs will be installed at the intersections of CTH “C” & 104<sup>th</sup> Avenue, CTH “C” & Bain Station Road and CTH “H” & Bain Station Road. Motorists are advised to be alert to the change in traffic patterns and use caution when driving in the vicinity of this project and on the detour routes.

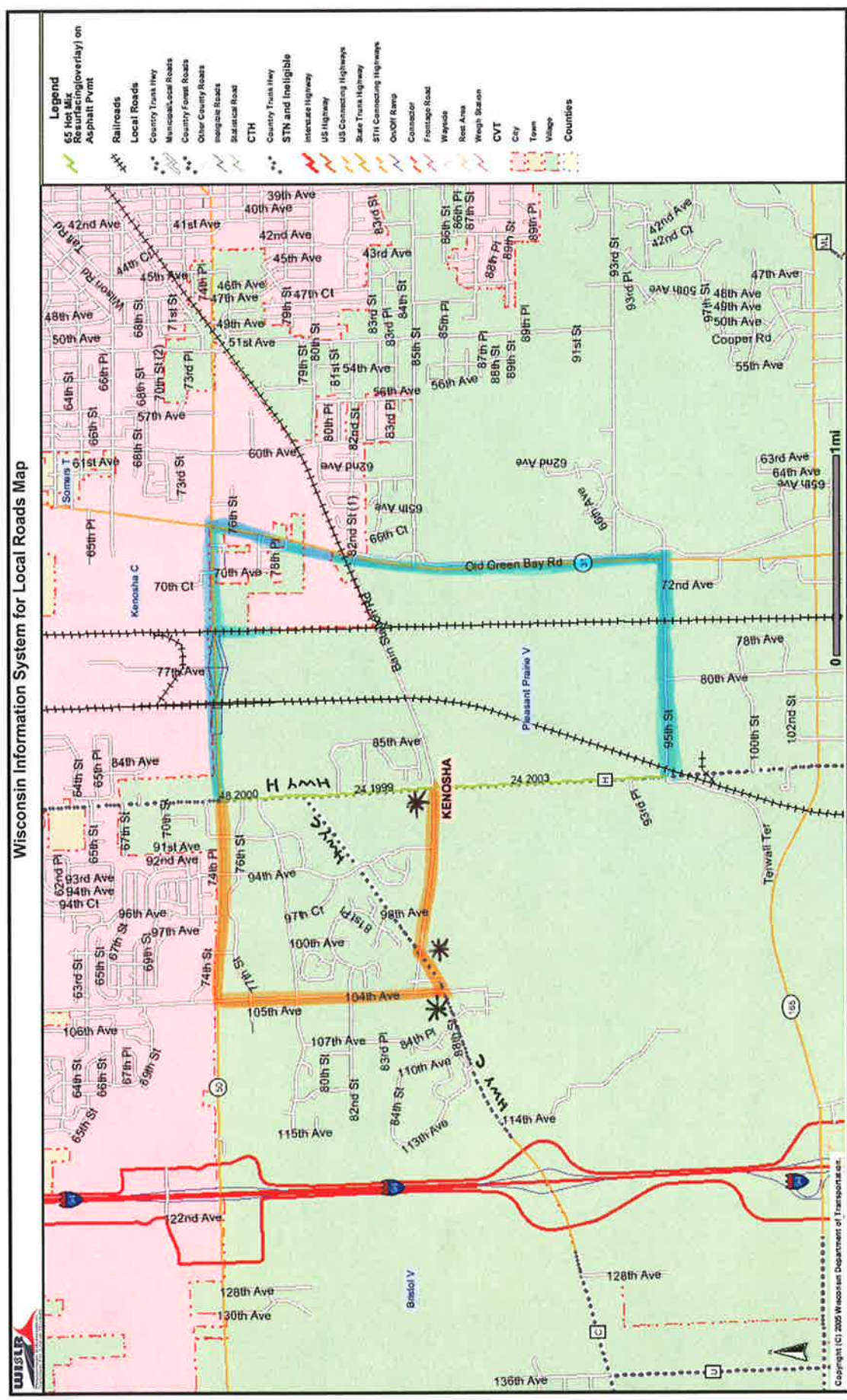
Attachments: Project Overview  
Detour Route Map



**PROJECT OVERVIEW**

LEGEND:

	CONCRETE SIDEWALK
	COLORED STAMPED CONCRETE PAVEMENT
	RAISED COLORED CONCRETE MEDIAN
	STRIPED ASPHALT MEDIAN (PAVEMENT MARKINGS - NON RAISED)
	ASPHALT PAVEMENT
	CURB & GUTTER
	GRASS AREA
	LED LUMINAIRE
	LANDSCAPING



CARS

TRUCKS

\* TEMPORARLY MULTI-WAY STOP

The information contained in this data set and information produced from this dataset were created for the official use of the Wisconsin Department of Transportation (WisDOT). Any other use while not prohibited, is the sole responsibility of the user. WisDOT expressly disclaims all liability regarding fitness of use of the information for other than official WisDOT business.